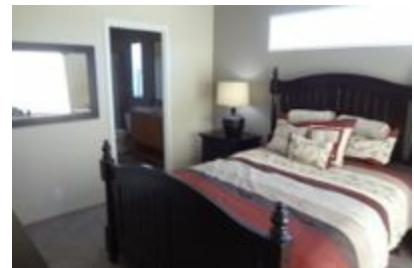
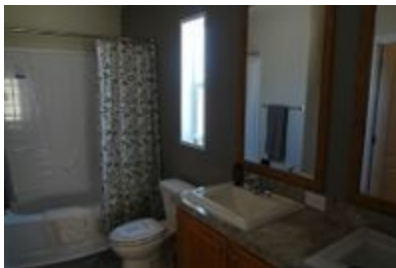




South Fork 48'



South Fork 48' Model number: 230WC28483W

3 beds • 2 baths • 1296 sq.ft. • 27' width • 48' depth

Our home building facilities invest in continuous product and process improvements. Plans, dimensions, features, materials, specifications and availability are subject to change without notice or obligation. Renderings and floor plans are representative likenesses of our homes and may differ from the actual homes. We invite you to tour a Home Center near you and inspect the highest value in quality housing available or call (208) 542-5454 to speak with a Home Consultant. Copyright 2017, CMH. All rights reserved.

<https://www.claytonofidahofalls.com>

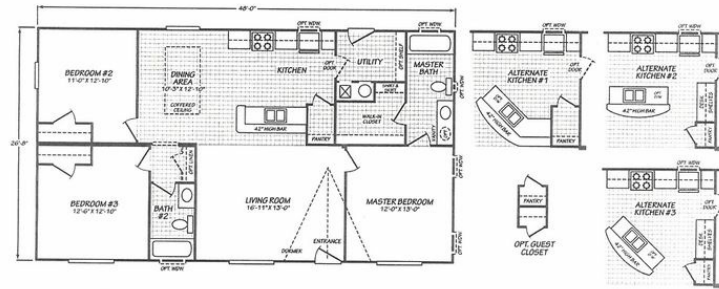
**CLAYTON HOMES-IDAHO
FALLS**

**2535 N YELLOWSTONE HWY
IDAHO FALLS, ID 83401**

Monday - Thursday: 9am to 6pm
Friday: 9am to 6pm
Saturday: 9am to 5pm
Sunday: Closed

(208) 542-5454

SOUTH FORK



South Fork 48' Model number: 230WC28483W

3 beds • 2 baths • 1296 sq.ft. • 27' width • 48' depth

Our home building facilities invest in continuous product and process improvements. Plans, dimensions, features, materials, specifications and availability are subject to change without notice or obligation. Renderings and floor plans are representative likenesses of our homes and may differ from the actual homes. We invite you to tour a Home Center near you and inspect the highest value in quality housing available or call (208) 542-5454 to speak with a Home Consultant. Copyright 2017, CMH. All rights reserved.

<https://www.claytonofidahofalls.com>

**CLAYTON HOMES-IDAHO
FALLS**

**2535 N YELLOWSTONE HWY
IDAHO FALLS, ID 83401**

Monday - Thursday: 9am to 6pm
Friday: 9am to 6pm
Saturday: 9am to 5pm
Sunday: Closed

(208) 542-5454